

DSA Summit | WISP Panel

Presented by

Angus Mc Cloed

ju  **rcetel**

The logo for JuiceTel features the word "ju" in a bold, black, lowercase sans-serif font. To its right is a stylized green leaf icon with three distinct lobes. This is followed by "rcetel" in a lowercase, rounded, green font with a thin white outline.

Connectivity Overview and Legacy

South Africa is weirdly interesting in terms of connectivity.

Most WISPs/ISP are concentrated where there is a potential to make money. The same can be said for other service providers.

Costs for broadband access is expensive compared to other African countries.

The unconnected are that way because they are not viable to connect.

Quality of Service has deteriorated over the years.

This is still true 25 odd years later.....

Connectivity Today

Big push to rollout fibre (underground and overhead). Sub 6Ghz and FWA is also popular.

Again, mainly in areas with potential to make money.

Quality of Service has deteriorated further across all service providers.

The unconnected have some hope with various initiatives in rural areas but not enough to make a difference.

COVID Pandemic arrives.

This brought a sobering fact that connectivity is not where it should be.

The regulatory environment works for some and not for others.

Spectrum and facility sharing would make a difference but ultimately is not supported.

Financial backing and general support to give communities opportunities for connectivity and consequently growth are skewed away from them.



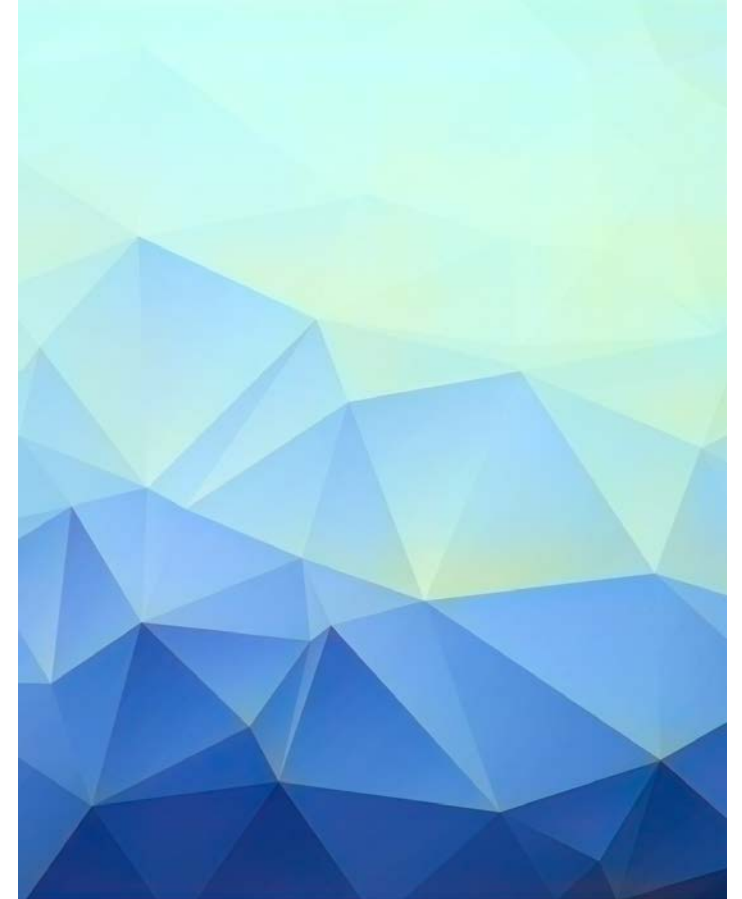
What Could be Done?

Working together to connect people is morally the right thing to do and consequentially money and growth would be generated but over time.

Regulatory changes to facilitate enablers like spectrum sharing, facility sharing, equitable access to spectrum, innovative spectrum pricing for smaller players, infrastructure rollout by local communities, service revenue sharing with communities, creation of localised ISP/WISP, etc. would be the win-win that everybody will benefit from.

This could extend from what MNO, FNO, Government and other infrastructure owners have to connect everyone but more especially those citizens in the rural areas

COVID has given the opportunity for connectivity to drive growth of access, solution development, education, agriculture, job creation, etc. but also quality of service at an affordable service cost.





We are driving the need for access with a focus on people and not money. Money is a consequence of this and not the driver.



We have looked at innovative yet simple ways of providing access.



One of those was identifying the close to ideal TVWS and FWA equipment that could make a difference.



The equipment is a mix of old and new, has a range of up to 50km NLOS for TVWS and the same range for FWA LOS, and works from Sub 1Ghz to 100Ghz.



Our partnerships start with people on the ground and work with them to create opportunities through our technology.



We have preferred to walk together rather than walking alone.

What are we Doing?

Questions

